



DOORHAN®

AUTOMATION SYSTEMS



➤ All automatics DoorHan different impeccable performance and advanced functionalities. It is made on the modern equipment with use of hi-tech materials. Each of the elements of automation systems is individually tested on several parameters, which guarantees 100 % quality control of products. DoorHan automation can be used both in residential and industrial facilities. All drives operators smoothly in a wide range of temperatures, as well as reliability, safety, ease of installation and maintenance.

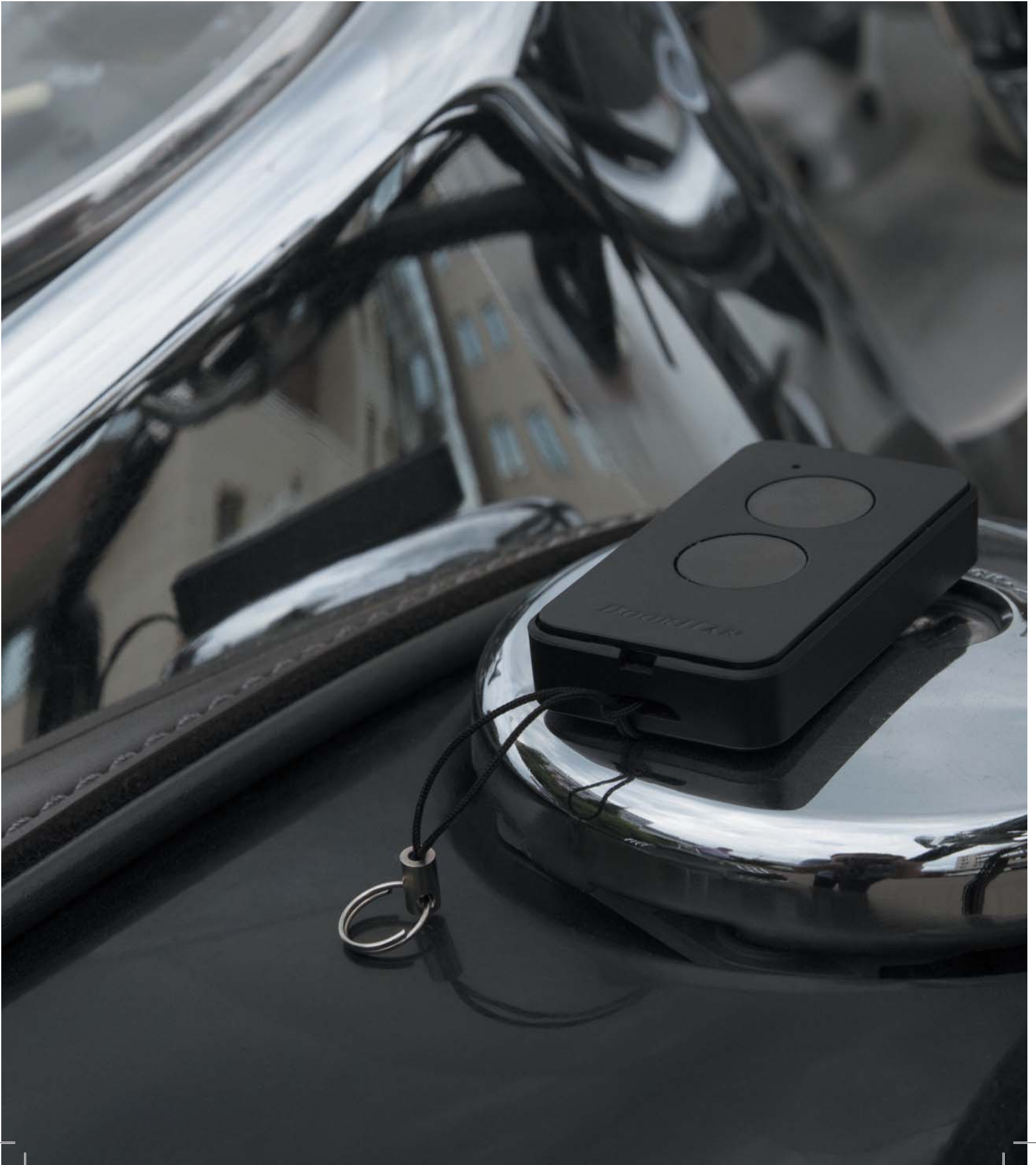




TABLE OF CONTENTS

| | |
|--|----|
| RESIDENTIAL SECTIONAL DOORS OPERATORS | 4 |
| INDUSTRIAL SECTIONAL DOORS OPERATORS | 6 |
| SLIDING GATES OPERATORS | 8 |
| SWING AND ARM GATES OPERATORS | 10 |
| BARRIERS | 12 |
| ACCESSORIES | 14 |
| TECHNICAL SPECIFICATIONS | 16 |

DOORHAN®

RESIDENTIAL SECTIONAL DOORS OPERATORS



ENERGY-SAVING
ACCESSORIES



INCREASED STRENGTH
CASE



SIMPLE
INSTALLATION



SECTIONAL-800PRO / SECTIONAL-1000PRO

- High quality standard. The operators feature a robust body, galvanized motor and built-in encoder which ensures an increased operation performance.
- Energy saving. Minimum energy consumption, due to the built-in LED lamp, which is more durable and provides a longer service life.
- Long service life. Smooth start and stop feature, ensures a minimum load on system components.



DOORHAN®

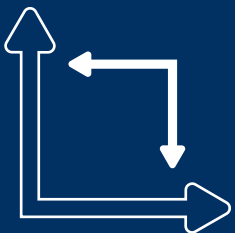
INDUSTRIAL SECTIONAL DOORS OPERATORS



STABLE DURABLE
PERFORMANCE



CHAIN REDUCER IS
PROVIDED



COMPACT
DIMENSIONS



SHAFT-120KIT / SHAFT-200KIT

- Soft start and soft stop. A quiet and a soft door motion ensures efficiency over the long run (Shaft-50PROKIT/85PROKIT).
- Wide range of accessories. The possibility to connect various accessories makes the operation more convenient and secure.
- Built-in emergency chain release ensures the ability to operate the door in case of power failure.

SHAFT-30IP65 / SHAFT-60IP65

SHPRO KIT



SHAFT-50PROKIT / SHAFT-85PROKIT

DOORHAN[®]

SLIDING GATES OPERATORS



INCREASED SERVICE
LIFE



EMERGENCY
UNLOCK



SIMPLE
INSTALLATION



SLIDING-1300PRO / SLIDING-2100PRO

- Ergonomic design. The operator doesn't take too much space and has a modern appearance.
- Connection convenience. The operator body especially designed for maximum convenience of installation.
- Top quality materials. We use high strength plastic and superior quality of aluminium.
- Oil bath. The gear motor immersed in liquid lubricant, which increases the possible intensity and lifetime of motor.



SLIDING-500-24V / SLIDING-500PRO / SLIDING-800PRO

DOORHAN®

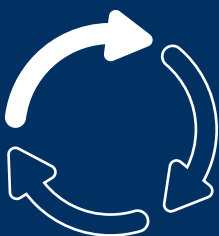
SWING AND ARM GATES OPERATORS



SIMPLE
INSTALLATION



SHOCKPROOF
PLASTIC



STABLE AND LONG
WORK



SWING-4000



SWING-3000PRO / SWING-5000PRO

- Ergonomic design. The operator doesn't take too much space and has a modern appearance.
- Connection convenience. Operator body especially designed for maximum convenience of installation.
- Top quality materials. We use high strength plastic and superior quality of aluminium.
- Oil bath. The gear motor immersed in liquid lubricant, which increases the possible intensity and lifetime of motor.



ARM-230



ARM-320PRO

DOORHAN®

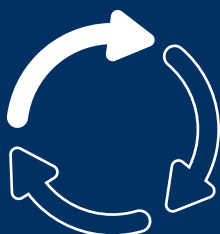
BARRIERS



STEEL GALVANIZED
CASE



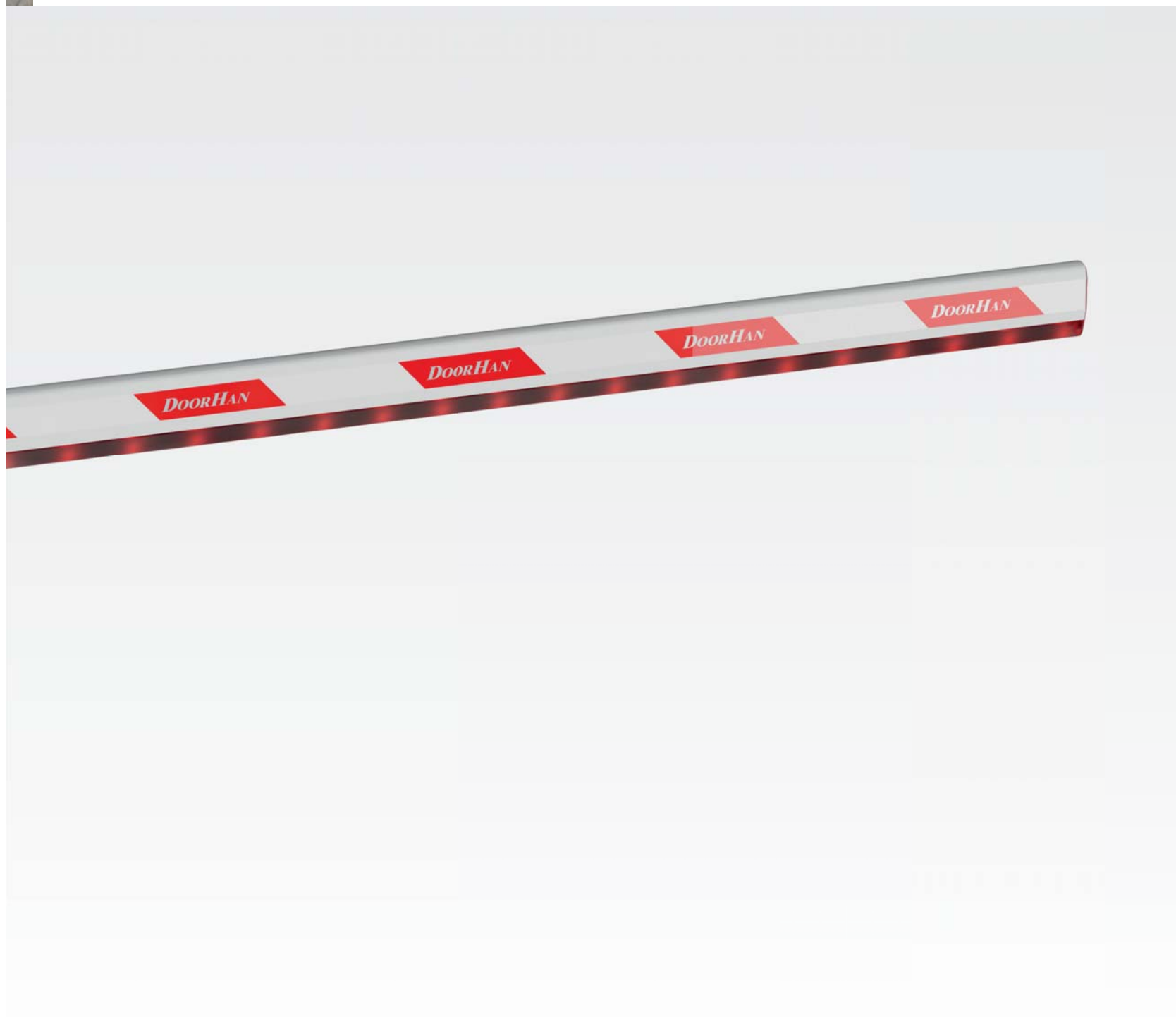
INCREASED SERVICE
LIFE



STABLE AND LONG
WORK



- Secured access solution. Barriers are intended for vehicle access control; capable of spanning openings of up to 6 meters.
- Resistance. Anti-vandal steel body provides protection against forced opening; along with its reinforced elements, DoorHan barriers ensure a constant operation during extreme weather conditions.
- Durability. Barriers have a longer service life, due to the application of limit switches.



ACCESSORIES



Transmitter-2PRO



Transmitter 4 EX



Transmitter 4PRO-Black



Lamp-PRO



📖 WI-FI module



📖 Photocells-N



📖 Keycode



📖 Keypad

SECTIONAL-800PRO / SECTIONAL-1000PRO



| TECHNICAL SPECIFICATIONS | SECTIONAL-800PRO | SECTIONAL-1000PRO |
|------------------------------|------------------|-------------------|
| Supply voltage, V | 220-240 | |
| Power frequency, Hz | 50/60 | |
| Maximum power consumption, W | 150 | 200 |
| Force, N | 800 | 1000 |
| Door speed, m/sec | 0.1 | |
| Maximum door weight, kg | 150 | 180 |
| Maximum opening height, mm | 2800 | 3400 |
| Intensity, % | 50 | |
| Temperature range, °C | -20...+55 | |
| Degree of protection | IP20 | |

SECTIONAL-1200



| TECHNICAL SPECIFICATIONS | SECTIONAL-1200 |
|------------------------------|----------------|
| Supply voltage, V | 220-240 |
| Power frequency, Hz | 50/60 |
| Maximum power consumption, W | 300 |
| Force, N | 1200 |
| Door speed, m/sec | 0.1 |
| Maximum door weight, kg | 220 |
| Maximum opening height, mm | 3800 |
| Intensity, % | 50 |
| Temperature range, °C | -20...+55 |
| Degree of protection | IP20 |



SHAFT-50PROKIT / SHAFT-85PROKIT



| TECHNICAL SPECIFICATIONS | SHAFT-50PROKIT | SHAFT-85PROKIT |
|------------------------------|----------------|----------------|
| Supply voltage, V | 220-240 | 220-240 |
| Power frequency, Hz | 50/60 | 50/60 |
| Maximum power consumption, W | 370 | 480 |
| Torque, Nm | 50 | 85 |
| Shaft speed, RPM | 24 | 21 |
| Degree of protection | IP54 | IP54 |
| Intensity, % | 65 | 65 |
| Temperature range, °C | -25...+50 | -25...+50 |
| Maximum door weight, kg | 270 | 370 |
| Chain length, m | 8 | 8 |
| Smooth start and stop | yes | yes |

SHAFT-30IP65KIT / SHAFT-60IP65KIT



| TECHNICAL SPECIFICATIONS | SHAFT-30IP65KIT | SHAFT-60IP65KIT |
|------------------------------|-----------------|-----------------|
| Supply voltage, V | 220-240 | 380-400 |
| Power frequency, Hz | 50/60 | 50/60 |
| Maximum power consumption, W | 300 | 350 |
| Torque, Nm | 30 | 60 |
| Shaft speed, RPM | 32 | 32 |
| Degree of protection | IP65 | IP65 |
| Intensity, % | 50 | 60 |
| Temperature range, °C | -40...+55 | -40...+55 |
| Maximum door weight, kg | 230 | 320 |
| Chain length, m | 8 | 8 |
| Smooth start and stop | no | no |

SHPRO KIT

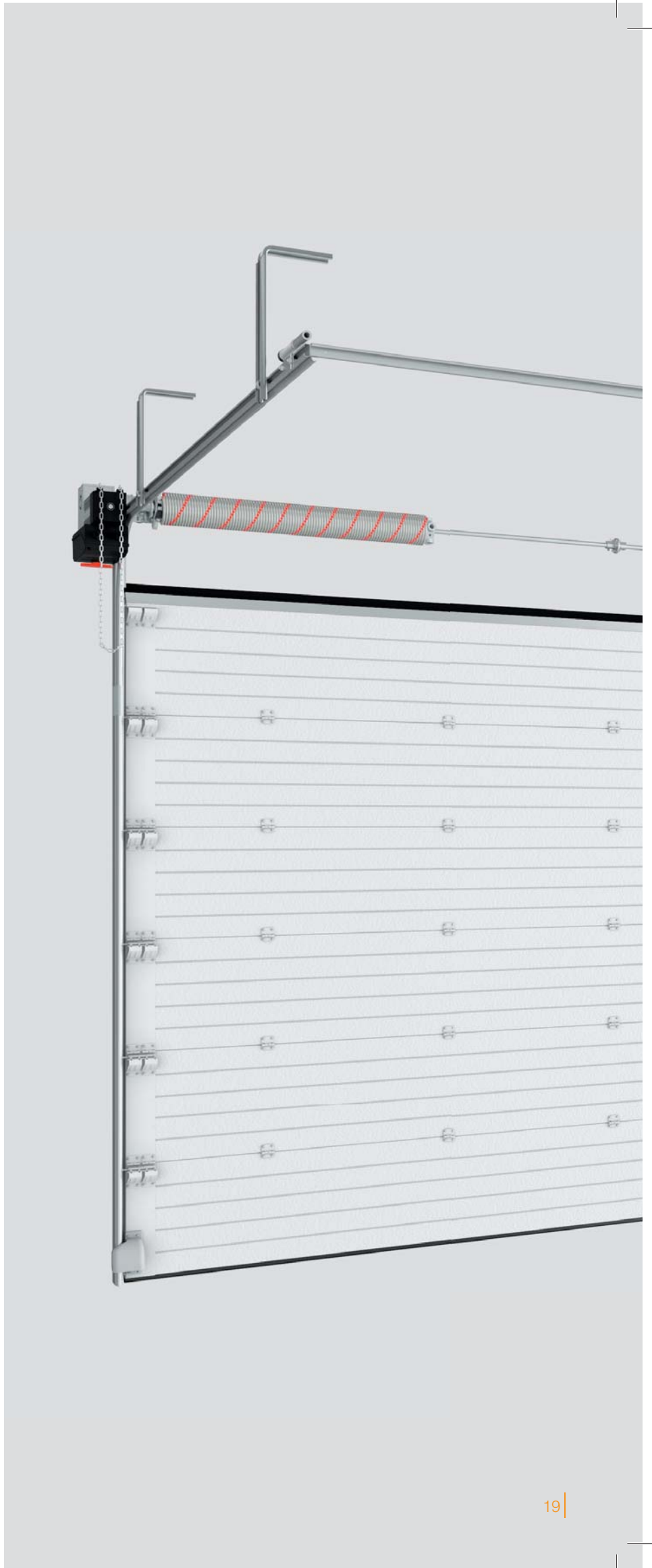
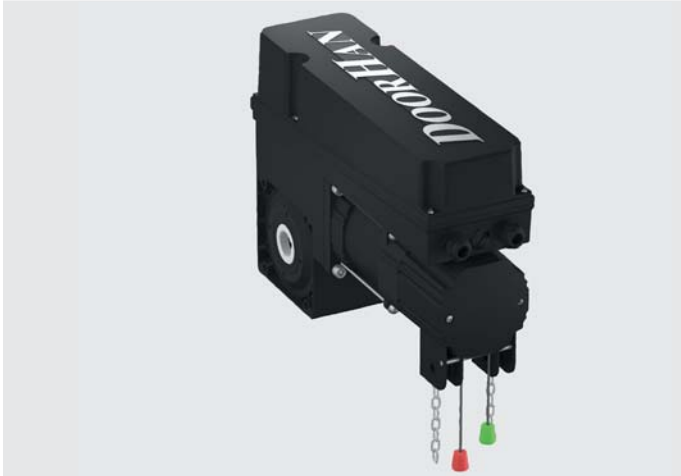


| TECHNICAL SPECIFICATIONS | SHPRO KIT |
|------------------------------|-----------|
| Supply voltage, V/Hz | 220-240 |
| Power frequency, Hz | 50/60 |
| Maximum power consumption, W | 370 |
| Torque, Nm | 50 |
| Shaft speed, RPM | 24 |
| Maximum door weight, kg | 270 |
| Intensity, % | 40 |
| Temperature range, °C | -25...+50 |
| Degree of protection | IP54 |

SHAFT-120KIT / SHAFT-200KIT



| TECHNICAL SPECIFICATIONS | SHAFT-120KIT | SHAFT-200KIT |
|------------------------------|--------------|--------------|
| Supply voltage, V/Hz | 380-400 | 380-400 |
| Power frequency, Hz | 50/60 | 50/60 |
| Maximum power consumption, W | 700 | 850 |
| Torque, Nm | 120 | 200 |
| Shaft speed, RPM | 22 | 22 |
| Maximum door weight, kg | 550 | 850 |
| Intensity, % | 65 | 65 |
| Temperature range, °C | -20...+55 | -20...+55 |
| Degree of protection | IP44 | IP44 |



SLIDING-500-24V / SLIDING-500PRO / SLIDING-800PRO



| TECHNICAL SPECIFICATIONS | SLIDING-500-24V | SLIDING-500PRO | SLIDING-800PRO |
|------------------------------|-----------------|----------------|----------------|
| Supply voltage, V | 220-240 | 220-240 | 220-240 |
| Power frequency, Hz | 50/60 | 50/60 | 50/60 |
| Maximum power consumption, W | 110 | 260 | 280 |
| Gate speed, m/min | 10/17 | 9 | 12 |
| Maximum gate weight, kg | 500 | 500 | 800 |
| Intensity, % | 100 | 50 | 50 |
| Temperature range, °C | -20...+55 | -20...+55 | -20...+55 |
| Degree of protection | IP54 | IP54 | IP54 |

SLIDING-1300PRO / SLIDING-2100PRO



| TECHNICAL SPECIFICATIONS | SLIDING-1300PRO | SLIDING-2100PRO |
|------------------------------|-----------------|-----------------|
| Supply voltage, V | | 220-240 |
| Power frequency, Hz | | 50/60 |
| Maximum power consumption, W | 550 | 750 |
| Gate speed, m/min | | 10 |
| Maximum gate weight, kg | 1300 | 2100 |
| Intensity, % | | 70 |
| Temperature range, °C | | -40...+55 |
| Degree of protection | | IP54 |

BARRIER-3000/4000/5000/6000



| TECHNICAL SPECIFICATIONS | BARRIER-3000 | BARRIER-4000 | BARRIER-5000 | BARRIER-6000 |
|------------------------------|--------------|-------------------------------------|--------------|--------------|
| Supply voltage, V | | | 220-240 | |
| Power frequency, Hz | | | 50/60 | |
| Maximum power consumption, W | | | 220 | |
| Maximum boom length, mm | 3000 | 4000 | 5000 | 6000 |
| Boom type | | Aluminum: oval, oval with LED light | | |
| Overall dimensions, mm | | 270 × 1015 × 140 | | |
| Number of springs | | 1 | | 2 |
| Opening time, sec | 2 | 4 | 5 | 6 |
| Intensity, % | | | 70 | |
| Temperature range, °C | | | -40...+55 | |
| Degree of protection | | | IP54 | |



TECHNICAL SPECIFICATIONS

SWING and ARM gates operators

SWING-4000



| TECHNICAL SPECIFICATIONS | SWING-4000 |
|------------------------------|------------|
| Supply voltage, V | 220-240 |
| Power frequency, Hz | 50/60 |
| Maximum power consumption, W | 150 |
| Maximum leaf weight, kg | 400 |
| Maximum leaf length, m | 4 |
| Intensity, % | 50 |
| Temperature range, °C | -20...+55 |
| Degree of protection | IP44 |

SWING-3000PRO / SWING-5000PRO



| TECHNICAL SPECIFICATIONS | SWING-3000PRO | SWING-5000PRO |
|------------------------------|---------------|---------------|
| Supply voltage, V | 220-240 | |
| Power frequency, Hz | 50/60 | |
| Maximum power consumption, W | 150 | |
| Maximum leaf weight, kg | 400 | 500 |
| Maximum leaf length, m | 3 | 5 |
| Intensity, % | 50 | 50 |
| Temperature range, °C | -40...+55 | |
| Degree of protection | IP54 | |

ARM-230



| TECHNICAL SPECIFICATIONS | ARM-230 |
|------------------------------|-----------|
| Supply voltage, V | 220-240 |
| Power frequency, Hz | 50/60 |
| Maximum power consumption, W | 120 |
| Torque, Nm | 230 |
| Maximum leaf weight, kg | 300 |
| Maximum leaf length, m | 2 |
| Intensity, % | 50 |
| Temperature range, °C | -20...+55 |
| Degree of protection | IP44 |

ARM-320PRO



| TECHNICAL SPECIFICATIONS | ARM-320PRO |
|------------------------------|------------|
| Supply voltage, V | 220-240 |
| Power frequency, Hz | 50/60 |
| Maximum power consumption, W | 150 |
| Torque, Nm | 320 |
| Maximum leaf weight, kg | 400 |
| Maximum leaf length, m | 2 |
| Intensity, % | 30 |
| Temperature range, °C | -20...+55 |
| Degree of protection | IP54 |



 MOSCOW, RUSSIA



DOORHAN®

+86-512-66316111

SALES.SUZHOU@DOORHAN.COM


DOORHAN.COM

SUZHOU DOORHAN MODERN METALS & MATERIALS CO., LTD


NO.5188, BAODAI WEST ROAD, XUKOU WUZHONG, SUZHOU, 215164

 NOVOSIBIRSK, RUSSIA



 OSTASHKOV, RUSSIA



 SUZHOU, CHINA



 KADAN, CZECH REPUBLIC

